



Long distance trains Part 2

**Get ready to travel
on our trains**

Queensland Rail Travel



Easy English



Blue words

Some words in this book are **blue**.

We write what the blue words mean.

Help with this book



You can get someone to help you

- understand this book
- find more information.



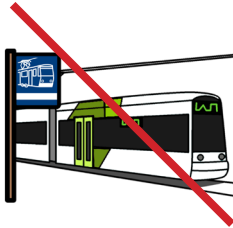
Contact information is at the end of this book.

About this book



This book is from Queensland Rail Travel.

We run **long distance** trains in Queensland.



Long distance means trains that

- are outside of the local public transport service
- go between different cities that are far apart.



We have **3** books about our long distance trains.

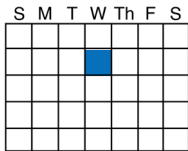


This book is **Part 2**, about how to get ready to travel on our long distance trains.

Information about your trip

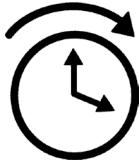


Before your trip you should check your ticket.



Make sure you booked the right

- day



- time



- station for getting on and off.

We might contact you on the mobile phone number you gave us if there is

- a change to your booking, like the time



- anything else we need to tell you.

What luggage you can bring



Luggage means what you pack to use on your trip, like

- a bag



- a suitcase



- a pram or stroller.

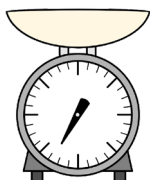
Check our website to see our rules about luggage.

For example

- what type of luggage you can bring



- how many pieces of luggage you can bring

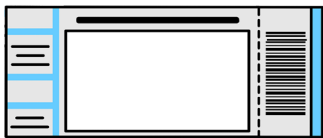


- how heavy the luggage can be.



Website queenslandrailtravel.com.au/travel-withus/onboardexperiences/luggage

What to pack for your trip

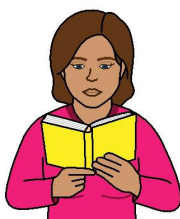


Make sure you have your train ticket ready.

Each piece of luggage must weigh under 20 kilos.

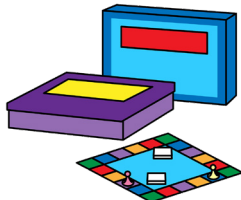


Pack things you want on the train in a small bag.



You can pack things to help you relax and spend your time on the train, like

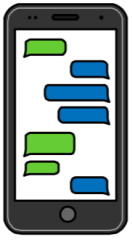
- books or magazines



- playing cards or games

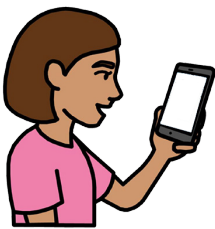


- a device, like a tablet or laptop, and charger.



Your device might **not** have an internet signal all the time.

There is free wifi on the Tilt Train but it is **not** strong.



You could download TV shows or movies on your device before your trip so they are ready to watch.



You can pack things to help you feel comfortable, like

- headphones



- ear plugs

- an eye mask

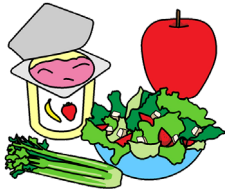


- hand sanitiser.



The temperature on the train might feel a bit cool.

You could pack a jumper or jacket to keep warm.



You can bring your own food and drink.

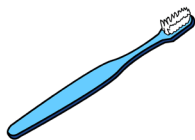


You **cannot** bring alcohol.

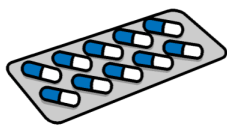
If you are travelling overnight

Pack things you will need, for example

- your toothbrush



- medication.



You might be able to buy some things for on the train.



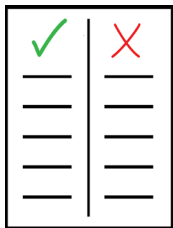
For example, ear plugs or a face mask.

There are some things you cannot pack



Some things are **not** allowed on the train so we can keep everyone safe.

For example, weapons or things that explode.



You can find a list of things you can and cannot pack on our website.



Website queenslandrailtravel.com.au/policycentre/pages/types-of-luggage.aspx

Information on our website

You can read our next Easy English book about our long distance trains on our website.



The book is called **Long distance trains Part 3**
At the station and your train trip.



Website [queenslandrailtravel.com.au/
pages/alternate-formats.aspx](http://queenslandrailtravel.com.au/pages/alternate-formats.aspx)



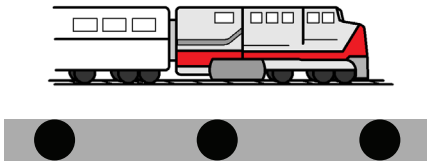
You can see what the trains are like inside.

Website [queenslandrailtravel.com.au/
planyourtrip/tour-our-trains](http://queenslandrailtravel.com.au/planyourtrip/tour-our-trains)



You can see a map that shows where the trains go.

Website [queenslandrailtravel.com.au/
pages/networkmap.aspx](http://queenslandrailtravel.com.au/pages/networkmap.aspx)



You can find out about each station.

Website [queenslandrailtravel.com.au/
planyourtrip/findyourstation](https://queenslandrailtravel.com.au/planyourtrip/findyourstation)



You can see the train food and drink menus.

Website [queenslandrailtravel.com.au/
travelwithus/onboardexperiences/menus](https://queenslandrailtravel.com.au/travelwithus/onboardexperiences/menus)

More information



For more information contact
Queensland Rail Travel.

Phone us



If you are calling in Australia
Call 1800 872 467



If you are calling outside of Australia
Call +61 7 3606 6630



Every day 7 am to 7 pm Queensland time.

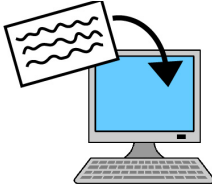


We are **closed** on 25 December, Christmas Day.

Contact us online



Website queenslandrailtravel.com.au



Email reservations@qr.com.au

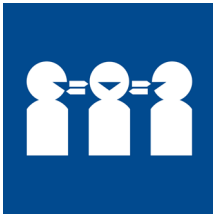


You can read our other Easy English books on our website.



Website [queenslandrailtravel.com.au/
pages/alternate-formats.aspx](http://queenslandrailtravel.com.au/pages/alternate-formats.aspx)

If you need help with English



Use the free Translating and Interpreting Service or TIS to make a phone call.

You can call the TIS in your language.



Call 131 450

Give the TIS officer the phone number you want to call.

If you need help to speak or listen



Use the National Relay Service to make a phone call.

You must sign up to the service first.



Website accesshub.gov.au/nrs-helpdesk



Call 1800 555 660

[illegible]

This Easy English document was created by Scope (Aust) Ltd. in December 2024 using Picture Communication Symbols (PCS). PCS is a trademark of Tobii Dynavox, LLC. All rights reserved. Used with permission. This document must not be sold to third parties. The images must not be reused without permission. For more information about the images, contact Scope on 1300 472 673 or visit scopeaust.org.au

